

HIVE carved wall tile

Hive, because six sides are better than one. The acoustic wall tile has a beveled edge that adds subtle dimension to tessellations of this classic shape. Made from sound-absorbing PET felt, the carved wall tile is available in TURF's 9 mm felt colors.



PATENT PENDING

SPECS

PRODUCT

Hive carved wall tile

CONTENT

polyester (PET) felt

60% pre-consumer recycled

9MM TILE

DIMENSIONS

11.75" W x 13.57" H x 9 mm T

FELT THICKNESS

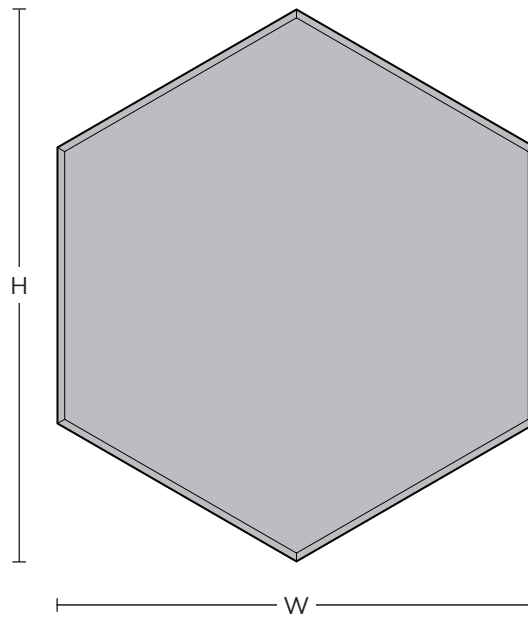
9 mm

BEVELED EDGE

carved at a 45° angle

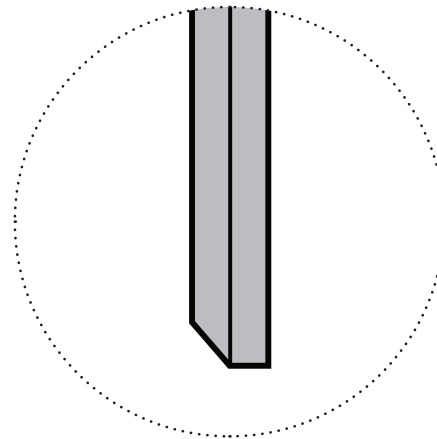
4.5 mm from the bottom

FRONT VIEW



SIDE VIEW

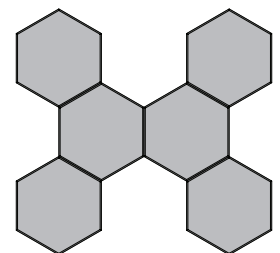
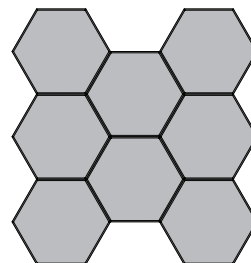
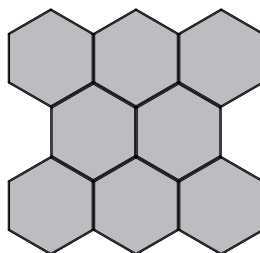
enlarged edge



T

LAYOUT

Hive's hexagonal tiles may be configured in a variety of ways.



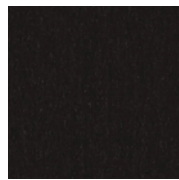
9MM FELT

TURF's Hive carved wall tile is made with 9mm PET felt board.

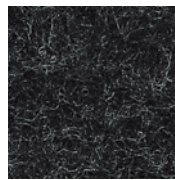
The process used to create PET felt often results in a heathered effect where multiple tones are present. Slight variations in color should be expected when using this sustainable material.

Felt thickness is 9mm +/- 0.5 mm.

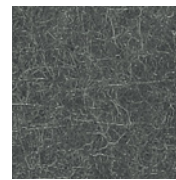
Monitors and printers vary. Please request a material sample to verify felt colors.



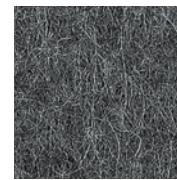
07 BLACK



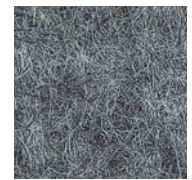
06 CHARCOAL



38 MATTE GREY



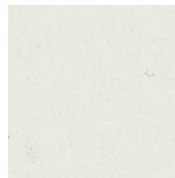
86 SLATE



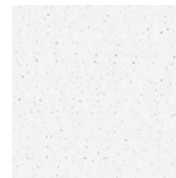
98 STORM



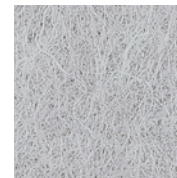
01 CREAM



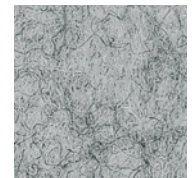
50 IVORY



05 WHITE



66 PEWTER



04 LIGHT GREY



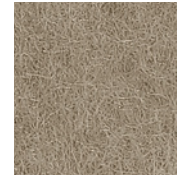
78 WHEAT



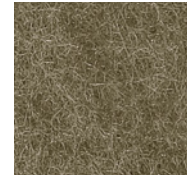
82 BARLEY



54 LATTE



48 LIGHT BROWN



32 BROWN



94 CORAL



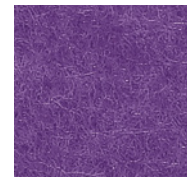
42 ORANGE



16 RED



58 RASPBERRY



39 LAVENDER



20 MANGO



62 SUNFLOWER



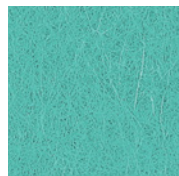
45 YELLOW



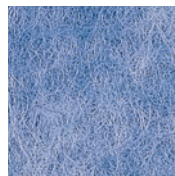
47 LIME



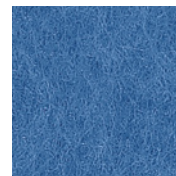
14 GREEN



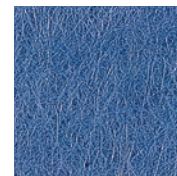
70 AQUA



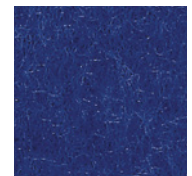
90 SKY



25 LIGHT BLUE



74 DENIM



29 DARK BLUE

TECH

ACOUSTICS

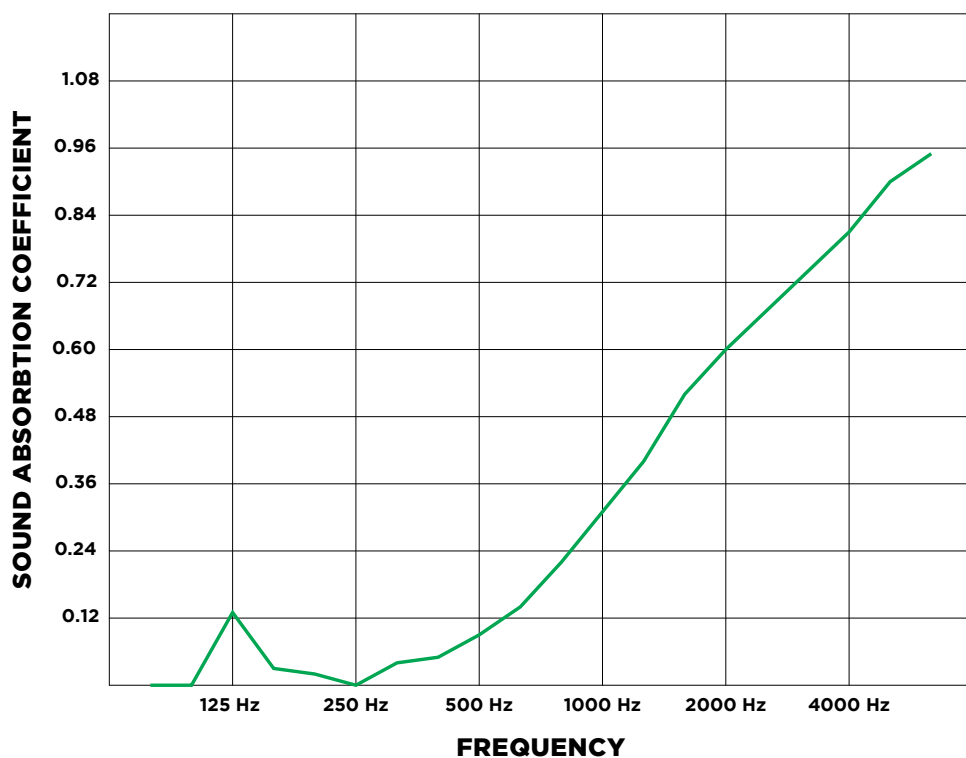
ASTM C423-17: Type A Mounting

FIRE RATING

ASTM E-84 - Class A

VOC

ASTM D5116 Compliant



9MM TILE: NRC = 0.25

ASTM C423-17: Type A Mounting. Carved wall tile NRC varies depending on field conditions and arrangement. Contact TURF for testing details.

DETAILS

LEAD TIME

ships in four (4) weeks

INSTALLATION

Hive is available with or without an adhesive backing. More information is available in the carved wall tile installation instructions.

WARRANTY

three (3) years

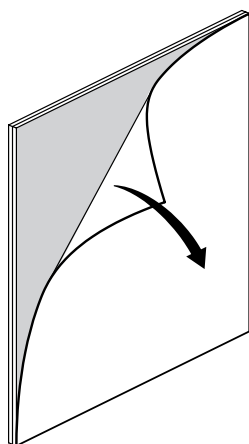
MAINTENANCE

Vacuum occasionally to remove any particulate matter and air-borne debris or dust. Compressed air can be used to dust the material in difficult to reach areas for large assemblies. Use standard household cleaners for spot cleaning.

CUSTOM

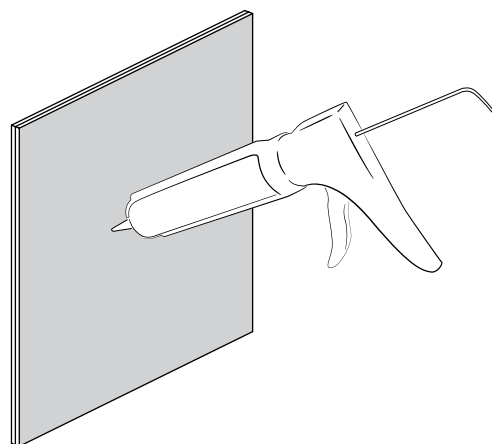
Hive carved wall tiles may be customized with additional layers and colors. Contact your rep for details.

ADHESIVE BACKING



A manufacturer-applied adhesive backing is available. The pressure-activated backing instantly adheres to a variety of wall surfaces.

CONSTRUCTION ADHESIVE



Carved wall tiles without an adhesive backing should be installed with a construction-grade adhesive specified by the contractor.