



Intrinsic Collection

**Mannington**  
COMMERCIAL





**Cover: Magnify** (Modular) - Authenticity 13002, Justice 43016  
**Above: Confluence** (Modular) - Optimism 81010, Security 63014  
**Installation** - Vertical Ashlar









**Intertwine (Modular) - Influence 11001**  
**Installation - Vertical Ashlar**





**Intertwine (Modular)** - Optimism 81010, Security 63014  
**Installation** - Vertical Ashlar





**Magnify** (Modular) - Authenticity 13002  
**Installation** - Vertical Ashlar





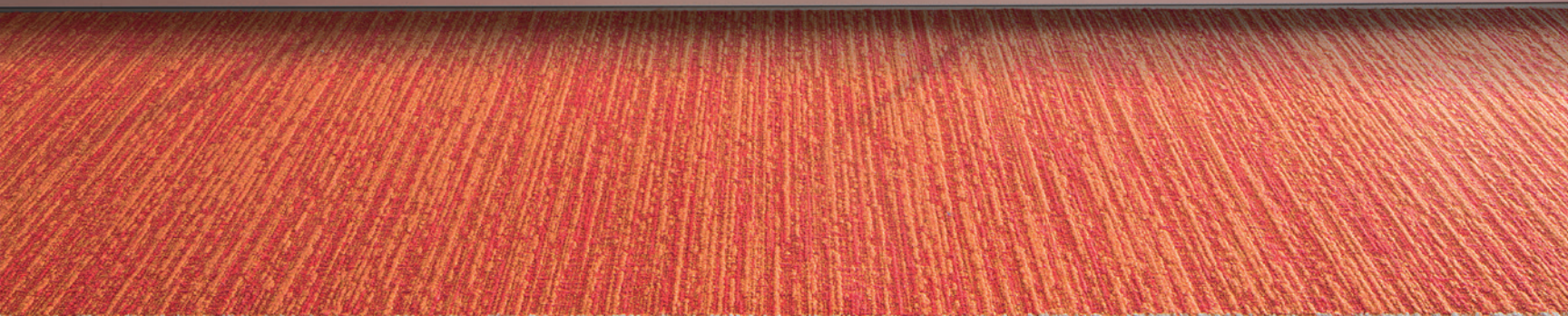
Magnify (Modular) - Optimism 81010, Security 63014  
Installation - Vertical Ashlar





**Merge** (Modular) - Influence 11001  
**Installation** - Horizontal Brick Ashlar





**Merge (Modular)** - Optimism 81010; Security 63014; Fairness 81004  
**Installation** - Horizontal Brick Ashlar

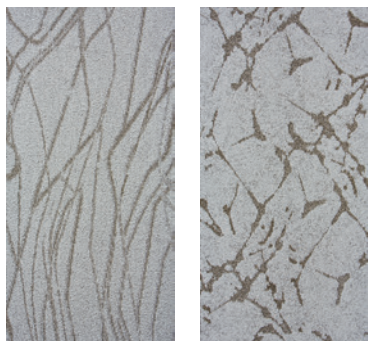




**Confluence** (Modular) - Authenticity 13002  
**Installation** - Vertical Ashlar

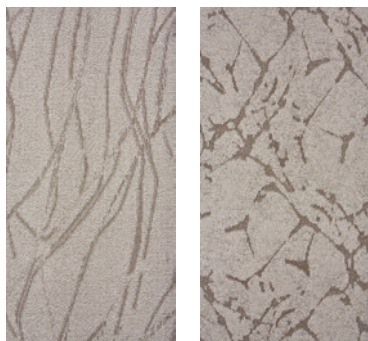


## Colorways



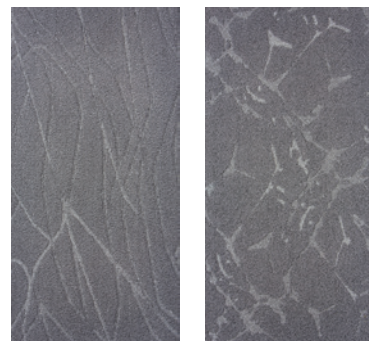
**Influence**

11001



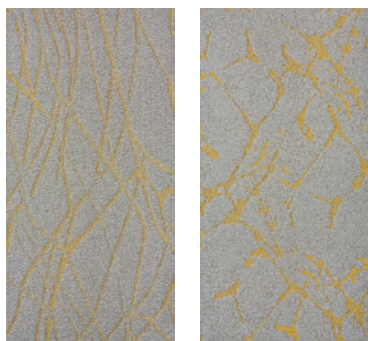
**Fairness**

81004



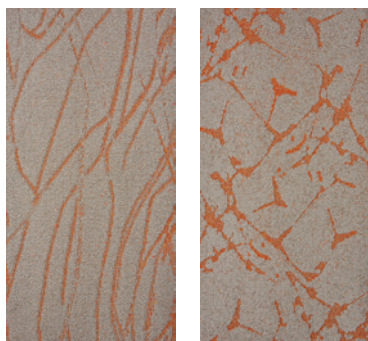
**Authenticity**

13002



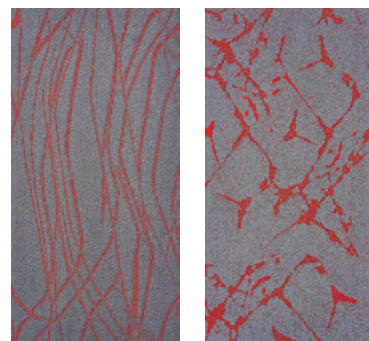
**Poise**

11007



**Optimism**

81010

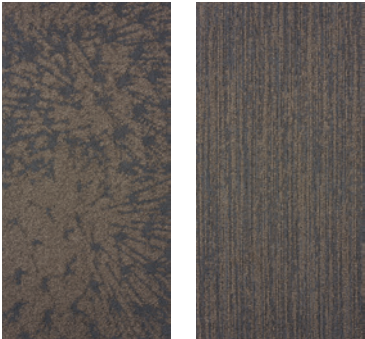
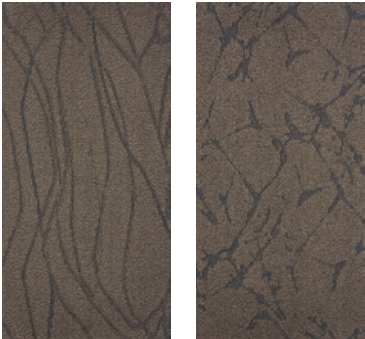


**Desire**

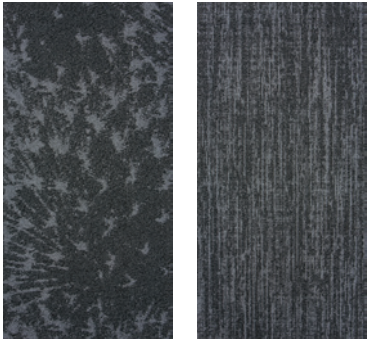
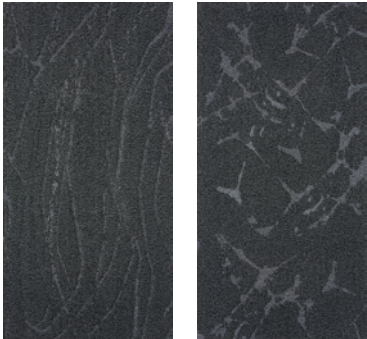
13008



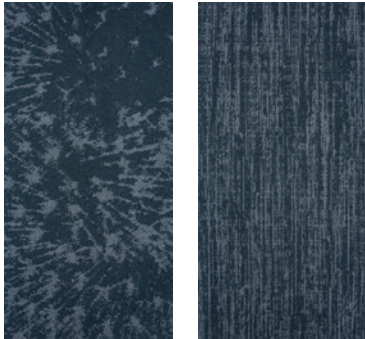
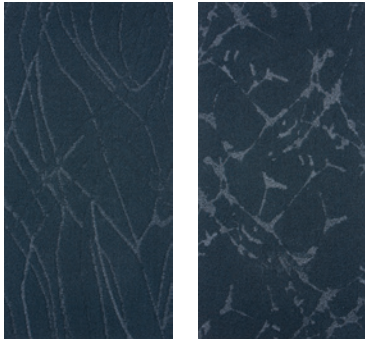
Colorways



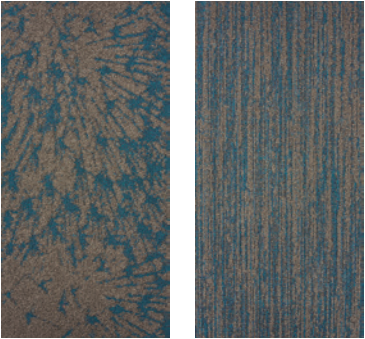
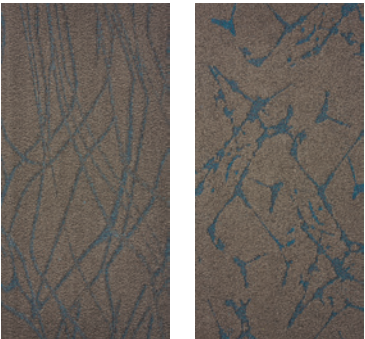
Compassion 84005



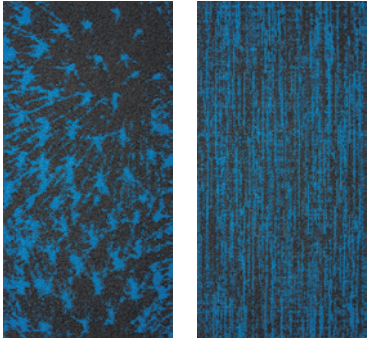
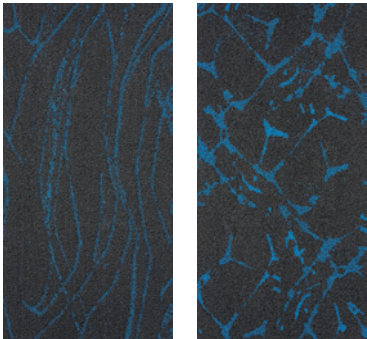
Identity 15003



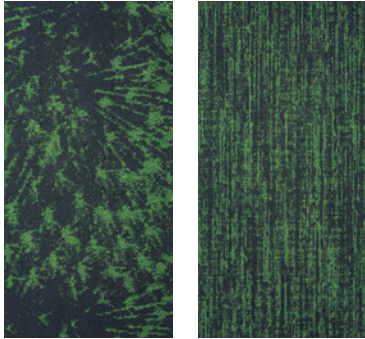
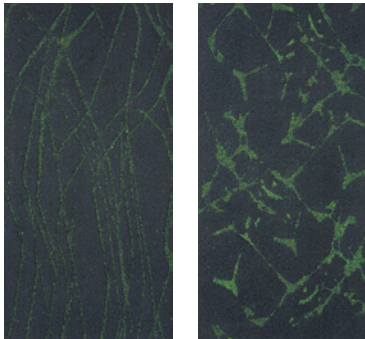
Knowledge 35006



Growth 84011



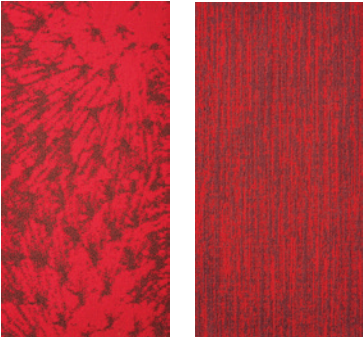
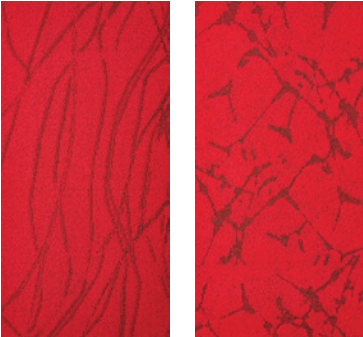
Humor 15009



Honesty 35012

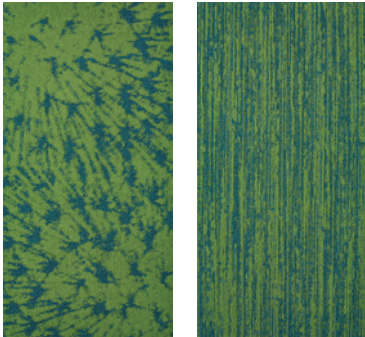
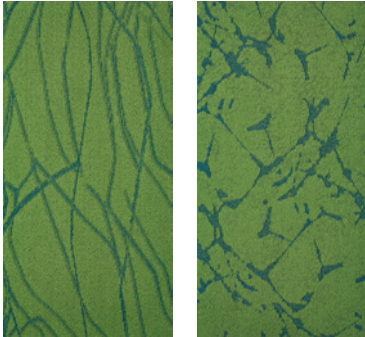


Colorways



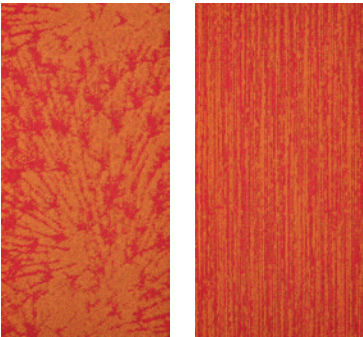
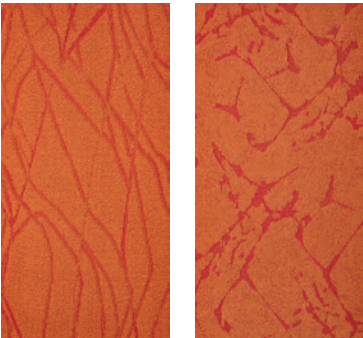
Pleasure

74013



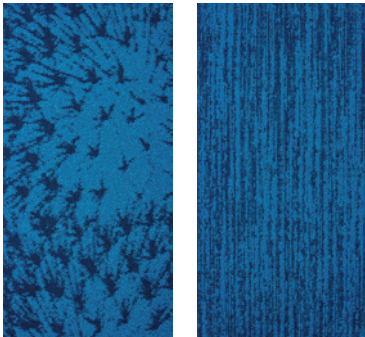
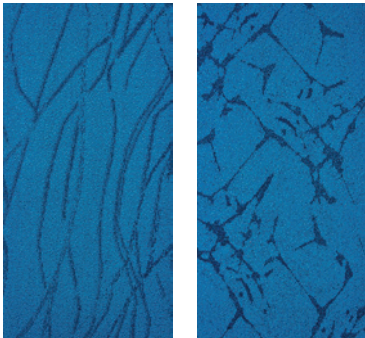
Justice

43016



Security

63014



Attitude

34015



Intrinsic Collection

Style	Confluence (Modular)	Intertwine (Modular)
Construction	Patterned Loop	Tip-Sheared Patterned Loop
Face Fiber	Type 6,6 Nylon	Type 6,6 Nylon
Dye Method	Solution	Solution
Gauge	5/64 (50.39 per 10 cm)	5/64 (50.39 per 10 cm)
Stitches Per Inch	11 (43.31 per 10cm)	10.33 (40.67 per 10cm)
Density	6,646 (246.95 Kg/m³)	5,684 (211.21 Kg/m³)
Pile Thickness	0.130" (3.30 mm)	0.152" (3.86 mm)
Weight	24 oz/yd² (814 g/m²)	24 oz/yd² (814 g/m²)
Backing Type	Infinity® 2 Modular	Infinity® 2 Modular
Size	18" x 36" (45.72 x 91.44 cm)	18" x 36" (45.72 x 91.44 cm)
Colors	16	16
Packaging	8 yd² / 16 Tiles	8 yd² / 16 Tiles
Adhesive	Infinity 2 Adhesive	Infinity 2 Adhesive
Installation Method	Vertical Ashlar	Vertical Ashlar
Testing		
Dimensional Stability (Aachen Test)	Passes	Passes
Electrostatic Propensity (AATCC 134)	Less than 3.0 kV	Less than 3.0 kV
Flooring Radiant Panel (ASTM E648)	Passes - Class 1; ≥ 0.45 watts/cm²	Passes - Class 1; ≥ 0.45 watts/cm²
Smoke Density (ASTM E662)	Passes - ≤ 450	Passes - ≤ 450
Methenamine Pill Test (ASTM D2859)	Passes	Passes
Hexapod (ASTM D5252) TARR	4	3.5
Environmental Data		
NSF/ANSI 140 Certification	Infinity® 2 Modular - Gold	
Recycled Content	Contains recycled content	
Indoor Air Quality	CRI Green Label Plus Certified	
Product Declarations	EPD, HPD	
LEED	May contribute to LEED credits: Building Product Disclosure & Optimization - EPDs Building Product Disclosure & Optimization - Sourcing Raw Materials Building Product Disclosure & Optimization - Material Ingredients; IEQc2 - Low Emitting Materials	
mindful MATERIALS	Visit mM Origin website, mindfulmaterials.origin.build, for current transparency information	
Manufacturing	Calhoun, GA (USA) - ISO 14001 Registered	
Warranty		
	Limited Lifetime Wear & Backing Warranty Limited 15-Year XGUARD® Stain Resistant Warranty Limited 15-Year ColorSafe® Bleach Resistant Warranty	

- Specifications are based on averages from normal manufacturing tolerances. Such variations do not affect product performance.
- Protective chair pads are recommended under office chairs with roller casters to preserve appearance and avoid premature wear.
- As with all quality carpets, slight variation in color may occur from dye lot to dye lot.
- Backing or other materials may be changed without prior notice when shortages occur or when technological advancements provide improved product performance.
- This product is intended solely for use as an indoor floor covering and is not recommended or sold for any other purpose.
- The inherent characteristics of geometric linear patterns can result in double-dark or double-light lines at the seam and to some extent pattern run-off or bias. This is not a manufacturing defect, and as such, should be considered when selecting a modular carpet installation method.
- Please make your final selection from an actual swatch. To order samples, go to [manningtoncommercial.com](http://manningtoncommercial.com) or call 800.241.2262 ext. 6913.



Intrinsic Collection

Style	Magnify (Modular)	Merge (Modular)
Construction	Textured Patterned Loop	Tip-Sheared Patterned Loop
Face Fiber	Type 6,6 Nylon	Type 6,6 Nylon
Dye Method	Solution	Solution
Gauge	5/64 (50.39 per 10 cm)	5/64 (50.39 per 10 cm)
Stitches Per Inch	6 (32.61 per 10cm)	11 (43.31 per 10cm)
Density	8,383 (311.49 Kg/m³)	6,857 (254.79 Kg/m³)
Pile Thickness	0.146" (3.71 mm)	0.126" (3.20 mm)
Weight	34 oz/yd² (1153 g/m²)	24 oz/yd² (814 g/m²)
Backing Type	Infinity® 2 Modular	Infinity® 2 Modular
Size	18" x 36" (45.72 x 91.44 cm)	18" x 36" (45.72 x 91.44 cm)
Colors	16	16
Packaging	8 yd² / 16 Tiles	8 yd² / 16 Tiles
Adhesive	Infinity 2 Adhesive	Infinity 2 Adhesive
Installation Method	Vertical Ashlar	Horizontal Brick Ashlar, Monolithic, Vertical Ashlar
Testing		
Dimensional Stability (Aachen Test)	Passes	
Electrostatic Propensity (AATCC 134)	Less than 3.0 kV	
Flooring Radiant Panel (ASTM E648)	Passes - Class 1; ≥ 0.45 watts/cm²	
Smoke Density (ASTM E662)	Passes - ≤ 450	
Methenamine Pill Test (ASTM D2859)	Passes	
Hexapod (ASTM D5252) TARR	4	
Environmental Data		
NSF/ANSI 140 Certification	Infinity® 2 Modular - Gold	
Recycled Content	Contains recycled content	
Indoor Air Quality	CRI Green Label Plus Certified	
Product Declarations	EPD, HPD	
LEED	May contribute to LEED credits: Building Product Disclosure & Optimization - EPDs Building Product Disclosure & Optimization - Sourcing Raw Materials Building Product Disclosure & Optimization - Material Ingredients; IEQc2 - Low Emitting Materials	
mindful MATERIALS	Visit mM Origin website, mindfulmaterials.origin.build, for current transparency information	
Manufacturing	Calhoun, GA (USA) - ISO 14001 Registered	
Warranty		
	Limited Lifetime Wear & Backing Warranty Limited 15-Year XGUARD® Stain Resistant Warranty Limited 15-Year ColorSafe® Bleach Resistant Warranty	

- Specifications are based on averages from normal manufacturing tolerances. Such variations do not affect product performance.
- Protective chair pads are recommended under office chairs with roller casters to preserve appearance and avoid premature wear.
- As with all quality carpets, slight variation in color may occur from dye lot to dye lot.
- Backing or other materials may be changed without prior notice when shortages occur or when technological advancements provide improved product performance.
- This product is intended solely for use as an indoor floor covering and is not recommended or sold for any other purpose.
- The inherent characteristics of geometric linear patterns can result in double-dark or double-light lines at the seam and to some extent pattern run-off or bias. This is not a manufacturing defect, and as such, should be considered when selecting a modular carpet installation method.
- Please make your final selection from an actual swatch. To order samples, go to manningtoncommercial.com or call 800.241.2262 ext. 6913.