

Second Story Collection

www.interface.com

United States Headquarters

1503 Orchard Hill Road
LaGrange, GA 30240
1.800.634.6032 ext.56511

Canadian Headquarters

233 Lahr Drive
Belleville, ON K8N 5S2
1.800.267.2149 ext.52128

Brazilian Headquarters

Rua Surubim, 577 - Conjuntos
73/74 7º Andar
04571-050 - São Paulo - SP
+ 55 11 2196 0900

Latin American Headquarters

Montes Urales # 415 Piso 6
Col. Lomas de Chapultepec
México City, D.F. 11000
Mexico
+ 52 55 6395 5100

CIM # IFS00821 01/2019



Climate change is undeniable. And reversible. Our mission is to prove it. Join the #ClimateTakeBack and help create a climate fit for life.

Interface

Second Story™ Collection

We might arrive in the same city, walk past the same places, stop at the same café, but experience it all in different ways. While our descriptions will have some of the same details, the stories we tell will be uniquely our own.

Second Story Collection is a study in how textures can transform the experience of a space in a highly nuanced way. The four patterns in this collection—Sublet™, Duplex™, Classic Seven™ & Brownstone™, connect to one another through common threads of ideas and color and complement one another through subtle changes in scale, loft and contrast.

Second Story is organized into eight color groupings that range from pure tonal to multi-hued yarns with light, medium and dark values influencing what we see in each. Each of the four patterns cover the floor in a monolithic way, quietly finishing the space without overwhelming the eye.

Like all of our products made around the world, Second Story is carbon neutral – just one of the many steps we take toward creating a climate fit for life. Join the **#ClimateTakeBack** movement. What will your story be?







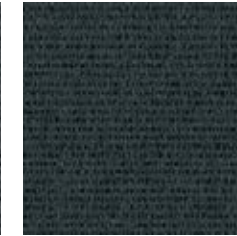
Sublet™ Colorline



105879 UPPER EAST



105880 TURTLE BAY



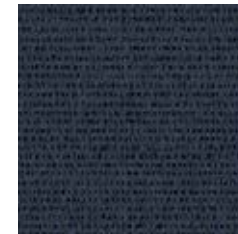
105881 SOHO



105882 SUTTON PLACE



105883 MIDTOWN



105884 FIFTH AVE.



105885 GRAMERCY



105886 WEST VILLAGE

Specifications

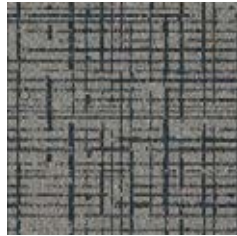
Modular, 50cm x 50cm	1255902500
Backing System	GlasBac® Tile
Yarn Manufacturer	Aquafil
Yarn System	100% Recycled Content Type 6 Nylon
Color System	100% Solution Dyed
Construction	Tufted Cut & Loop
Preservative Protection	Intersept®
Soil/Stain Protection	Protekt2®
Pile Thickness	0.068 in., 1.7 mm
Pile Density	10,059
Total Recycled Content	76%
Indoor Air Quality	CRI Green Label Plus #GLP0820



CARPET PRODUCT SUBLET™ COLOR 105882 SUTTON PLACE

LVT PRODUCT LEVEL SET™ | TEXTURED WOODGRAINS COLOR A00417 SILVER DUNE INSTALLED ASHLAR

Duplex™ Colorline



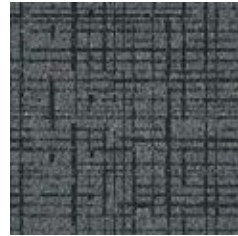
105891 UPPER EAST



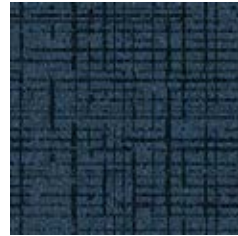
105892 TURTLE BAY



105893 SOHO



105894 SUTTON PLACE



105895 MIDTOWN



105896 FIFTH AVE.



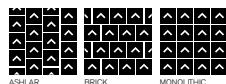
105897 GRAMERCY



105898 WEST VILLAGE

Specifications

Modular, 50cm x 50cm	1256002500
Backing System	GlasBac® Tile
Yarn Manufacturer	Aquafil
Yarn System	100% Recycled Content Type 6 Nylon
Color System	100% Solution Dyed
Construction	Tufted Cut & Loop
Preservative Protection	Intersept®
Soil/Stain Protection	Protekt2®
Pile Thickness	0.099 in., 2.5 mm
Pile Density	7,273
Total Recycled Content	76%
Indoor Air Quality	CRI Green Label Plus #GLP0820





Classic Seven™ Colorline



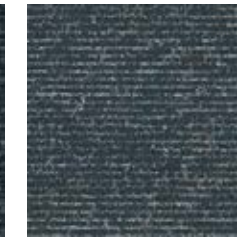
106092 UPPER EAST



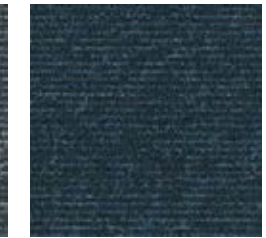
106093 TURTLE BAY



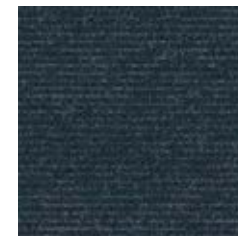
106094 SOHO



106095 SUTTON PLACE



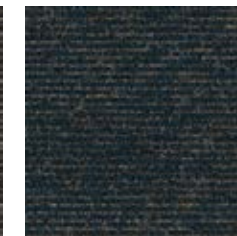
106096 MIDTOWN



106097 FIFTH AVE.



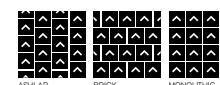
106098 GRAMERCY



106099 WEST VILLAGE

Specifications

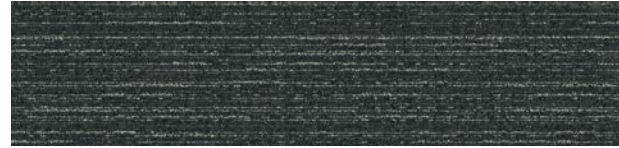
Modular, 50cm x 50cm	1394102500
Backing System	GlasBac® Tile
Yarn Manufacturer	Aquafil
Yarn System	100% Recycled Content Type 6 Nylon
Color System	100% Solution Dyed
Construction	Tufted Sheared
Preservative Protection	Intersept®
Soil/Stain Protection	Protekt2®
Pile Thickness	0.126 in., 3.2 mm
Pile Density	8,000
Total Recycled Content	78%
Indoor Air Quality	CRI Green Label Plus #GLP0820



Brownstone™ Colorline



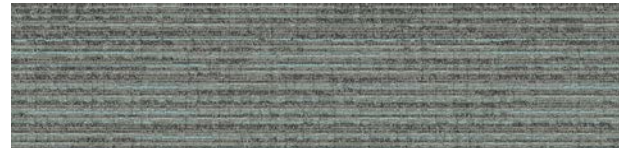
105867 UPPER EAST



105868 TURTLE BAY



105869 SOHO



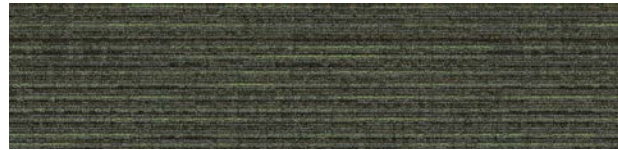
105870 SUTTON PLACE



105871 MIDTOWN



105872 FIFTH AVE.



105873 GRAMERCY



105874 WEST VILLAGE

Specifications

Modular, 25cm x 1m	139230AK00
Backing System	GlasBac® Tile
Yarn Manufacturer	Aquafil
Yarn System	100% Recycled Content Type 6 Nylon
Color System	100% Solution Dyed
Construction	Tufted Pattern Loop
Preservative Protection	Intersept®
Soil/Stain Protection	Protekt2®
Pile Thickness	0.125 in., 3.2 mm
Pile Density	7,776
Total Recycled Content	77%
Indoor Air Quality	CRI Green Label Plus #GLP0820



Why Our Modular Flooring?



Modular Flooring

Performance and flexibility. Interface's standard backing systems set the industry standard for modular performance. Tiles stay on the floor with no upcurl, no tapping and no rippling effect, yet are easy to selectively replace. Our modular carpet is easier to handle than bulky roll carpet and produces an average of just 3-4% waste compared to roll carpet's average of 14%. And it installs seamlessly with our LVT, no transition strips needed.



Carbon Neutral Floors™

Create a climate fit for life. All Interface flooring sold globally is third party verified carbon neutral. We've taken a holistic approach to achieve carbon neutrality, first through reducing the carbon footprint of our products and then using carbon offsets for the remainder, including the emissions from raw materials, our manufacturing processes and product use to end of life.



TacTiles®

No glue installation. Our revolutionary TacTiles installation system eliminates the need for glue, adhering tiles securely together to form a floor that "floats" for greater flexibility, easier replacement and long-term performance. The result? Less mess, less waste and virtually no VOCs, not to mention an environmental footprint that is over 90% lower than that of traditional glue adhesives.



Intersept®

Mold protection. Our proprietary preservative, Intersept, protects our modular carpet against mold growth and odor-causing bacteria—guaranteed. Intersept treated carpet, with proper maintenance, shows no mold or bacterial growth when tested per the ASTM E2471 Standard Test Method. Intersept is EPA approved for safe use in carpet, water insoluble and contains no halogens, heavy metals, phenols or formaldehyde.



ReEntry®

Recyclable is now a reality. Through our ReEntry program and partnerships with our fiber suppliers and recycling centers throughout North America, separated Type 6 and 6,6 nylon are recycled into new 6 and 6,6 nylon while separated GlasBac®, GlasBacRE and similar competitor backings are recycled into new GlasBacRE non-virgin PVC backing using our Cool Blue™ technology. The result? Products with up to 89% total recycled content, including as much as 27% post-consumer content.



Sustainable Choice

Environmental responsibility. More than 95% of Interface products manufactured in the Americas carry the GreenCircle Certified Environmental Facts label, which has verified that standard Interface products are manufactured using 99% renewable energy and offer a minimum of 66% and 80% total recycled content when backed with GlasBac and GlasBacRE backing respectively.

Transparency and certified sustainability leadership come standard on all Interface products, including published ingredients in HPDs (Health Product Declarations) or Declare Labels. In addition, more than 99% of our products globally have a published EPD (Environmental Product Declaration), which evaluates consistent factors based on full life cycle assessment (LCA). And, all Interface products with GlasBacRE backing are certified to the Platinum level of the NSF/ANSI 140 Sustainable Assessment for Carpet. GlasBac backed products meet the Gold level. NSF/ANSI 140 certified products contribute toward a USGBC or CaGBC LEED credit.

Samples

Order samples at www.interface.com. You'll receive email order confirmations, 24/7 access to order status and more. Not near a computer? You can also request samples by calling one of the numbers below.

United States 1.877.605.1500	Canada 1.866.398.3192
Brazil + 55 11 2196 0900	Latin America + 52 55 6395 5100

www.interface.com

Register at www.interface.com to:

- Browse products and order samples
- View carpet in a variety of room scenes
- Browse floor designs, change colors, view as a grid or in a room, download and share
- Use our LEED Calculator
- Check order status and inventory availability
- Sign up to get the latest information on Interface products and news

InterCircle™ Sample Return

Help us close the loop on the carpet sampling process. Through our InterCircle Sample Return program, sample materials stay out of the landfill and are re-used as samples until it is time to recycle them into new carpet. By reducing sample production material and diverting old materials from the landfill, we can reduce our overall environmental footprint.

Call 1.877.605.1500 (U.S.) or 1.866.398.3192 (Canada) to order a sample return bag with a prepaid return label.

Third Party Certification



Bureau Veritas – All Interface flooring sold globally is third party verified carbon neutral.



Environmental Product Declaration (EPD) – A statement of product ingredients and environmental impacts over the entire life cycle of a product. A comprehensive life cycle assessment (LCA) is performed to ISO standards to develop an EPD, after which both the EPD and LCA must be third party verified.



Sustainable Assessment for Carpet – The only carpet sustainability standard in North America that evaluates the environmental impact of carpet for its entire lifecycle.



CRI Green Label Plus – An independent testing program that identifies carpet and adhesives with very low emissions of VOCs to help improve indoor air quality.

All product specifications reflect averages derived from product sample testing, are subject to normal manufacturing and testing tolerances and inherent pattern variances, and may be changed without notice. For more information about these and other important attributes of the product(s) described herein, including recycled content and product warranty information, please see www.interface.com/disclaimer.



Printed on 50% post consumer waste (PCW) fiber manufactured using wind power.

We have tried our very best to accurately represent product colors. However, due to the nature of printed materials, color of actual products may vary slightly. Please request a sample to see actual product color.