

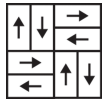
Angle Tile

Product Type	Carpet Tile
Collection	Beyond The Fold
Style Number	5T058
Construction	Multi-Level Pattern Loop
Fiber	Ecosolution Q® Nylon
Dye Method	66% Solution Dyed / 34% Yarn Dyed
Primary Backing	Synthetic
Secondary Backing	Ecworx® Tile
Protective Treatments	SSP® Shaw Soil Protection
Recommended Adhesive	LokWorx+ Carpet Tile Adhesive, Shaw 5100, Shaw 4151, LokDots, LokWorx, Shaw 3800 or Shaw 5036

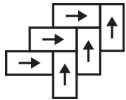


	u.s.	metric
Product Size	18 in x 36 in	46 cm x 91 cm
Area per Carton	45 ft²	4.18 m²
Pieces per Carton	10 pcs	
Gauge	1/12 in	47.2 per 10 cm
Stitches	10.0 per in	39.0 per 10 cm
Finished Pile Thickness	0.143 in	3.63 mm
Average Density	6545 oz/yd³	0.242 g/cm³
Kilotex		13.22
Total Thickness	0.266 in	6.76 mm
Tufted Weight	26 oz/yd²	881.5 g/m²

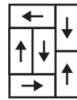
Recommended Installation Method



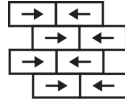
Basketweave



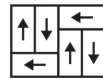
Herringbone



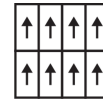
Boxed In



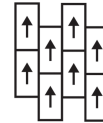
Brick



Half Basketweave



Monolithic



Ashlar

Coordinating Products

Carpet Tile: **Expand Tile, Folded Tile, Folded Edge Tile**

Performance + Testing

Antimicrobial Assessment	Passes (AATCC-174) (When installed using Shaw 5036 adhesive)
Pill Test	Pass
Radiant Panel	Class I
NBS Smoke	Less Than 450
Electrostatic Propensity	Less Than 3.5 kv
CRI Green Label Plus (GLP)	GLP9968
ADA Compliance	>0.6, meets the recommended static coefficient of friction for ADA walking surfaces and accessible routes***

Test Reports may be included or listed by the manufacturing/inventory style number as opposed to the noted selling style number.

Warranties

Lifetime Commercial Limited Warranty

Corporate Headquarters +1 800 257 7429 | +1 706 532 7984 | Atlanta +1 404 853 7429 | Bengaluru +91 80 6773 0202 | Beijing +86 10 6568 588 | Chicago +1 312 467 1331 | Dubai +971 4 584 6956 | Hong Kong +852 2623 0371 | Latin America (Miami) +1 305 827 5912 | London +44 207 961 4120 | Los Angeles +1 800 233 1614 | Melbourne +61 3 9939 8543 | Mexico City +55 5010 7600 | Mumbai +91 22 6284 5050 | Nantong +86 400 800 7429 | New York +1 212 953 7429 | Paris +33 (0) 1 81 22 44 39 | San Francisco +1 415 955 1920 | Santiago +562 2431 5000 x 550 | São Paulo +55 11 3071 1702 | Shanghai +86 21 3338 4000 | Singapore +65 6733 1811 | Sydney +1 800 556 302

Product Transparency

Shaw Contract is dedicated to providing clients with a building chemistry that's safe and dependable. Working together, we will help you meet your goals as they pertain to material health. EcoWorx® products with Eco Solution Q® Nylon are Cradle to Cradle Certified® Silver and assessed for impacts on human health and the environment. This product can be recycled. When it's time to replace, we can collect and recycle it through our Environmental Guarantee.*

Attributes + Certifications

Cradle to Cradle Certified®	Silver Level (Version 4.0)
Health Product Declaration (HPD)	1,000 ppm Disclosure
Environmental Product Declaration (EPD)	3rd Party Certified in Accordance with ISO 14044, ISO 14025 & EN15804
Living Building Challenge (LBC)	Free of Red List Chemicals
Declare	LBC Compliant
NSF 140	Gold
CRI Green Label Plus (GLP)	GLP9968
Building Research Establishment (BRE)	Certified
Good Environmental Choice Australia (GECA)	Certified
Singapore Green Label	Certified
CE Marking (EN 14041)	3rd Party Certified
Environmental Guarantee*	Shaw Pledges to Transport And Recycle Any Ecoworx Tile or Broadloom Carpet Within The United States And Canada At No Cost to The Customer.
Total Recycled Content	35% (Pre-Consumer 35% Post-Consumer 0%)
Product Packaging	100% Recyclable
Country of Origin**	USA

LEED Contribution Credit

MR Credit: Building Product Disclosure and Optimization Environmental Product Declarations - Option 1: Environmental Product Declaration (EPD)	3rd Party Certified in Accordance with ISO 14044, ISO 14025 & EN15804
MR Credit: Building Product Disclosure and Optimization Material Ingredients - Option 1: Material Ingredient Reporting	C2C Silver Level (Version 4.0)
MR Credit: Building Product Disclosure and Optimization Material Ingredients - Option 2: Material Ingredient Optimization	3rd Party Certified in Accordance with ISO 14044, ISO 14025 & EN15804
MR Credit: Building Product Disclosure and Optimization Sourcing of Raw Materials - Option 2: Leadership Extraction Practices	Environmental Guarantee: Shaw Pledges to Transport And Recycle Any Ecoworx Tile or Broadloom Carpet Within The United States And Canada At No Cost to The Customer.
EQ Credit: Low Emitting Materials Option 1: Product Category Calculations	Green Label Plus Certification: GLP9968
MR Credit: Interiors Life-Cycle Impact Reduction Option 3: Design for Flexibility	Ecoworx Tile with Lokdots Installation System

Additional Information

* To learn more about the recyclability of our products and our Environmental Guarantee, please visit shawcontract.com/sustainability.

**Meets or exceeds all local and national regulations in country of manufacture.

***This carpet is manufactured to be ADA compliant, but to be fully ADA compliant, the end-user must ensure the carpet is adhered to the floor and installed as outlined in the ADA standards.

[Installation Guidelines](#)

[Maintenance Guidelines](#)

Specifications are subject to nominal manufacturing variance. Material supply and/or manufacturing processes may necessitate changes without notice.

This product is an exclusive design and may not be duplicated in any manner. Use of this design in the creation of another product design is also strictly prohibited.

Visit shawcontract.com/testing for more information.



Corporate Headquarters +1 800 257 7429 | +1 706 532 7984 | Atlanta +1 404 853 7429 | Bengaluru +91 80 6773 0202 | Beijing +86 10 6568 588 | Chicago +1 312 467 1331 | Dubai +971 4 584 6956 | Hong Kong +852 2623 0371 | Latin America (Miami) +1 305 827 5912 | London +44 207 961 4120 | Los Angeles +1 800 233 1614 | Melbourne +61 3 9939 8543 | Mexico City +55 5010 7600 | Mumbai +91 22 6284 5050 | Nantong +86 400 800 7429 | New York +1 212 953 7429 | Paris +33 (0) 1 81 22 44 39 | San Francisco +1 415 955 1920 | Santiago +562 2431 5000 x 550 | São Paulo +55 11 3071 1702 | Shanghai +86 21 3338 4000 | Singapore +65 6733 1811 | Sydney +1 800 556 302